



LaserBand[®]2 Advanced Wristbands for Paediatrics



SEE MORE. DO MORE.



Zebra's self-laminating LaserBand[®] 2 Advanced direct print laser wristbands feature an advanced shape and design that makes assembly easy and allows the wristband to lie flat on the wrist to enable quick scanning, while providing superior patient comfort.

Failure to correctly identify patients is one of the most serious risks to patient safety. Zebra's range of paediatric wristband solutions cover a wide range of requirements from those relating to patient comfort and reducing medical errors through to improving workflow and streamlining admissions processes.

Paediatric wristbands need to cover a wide range of patients from toddlers to teenagers. Zebra's LaserBand products are specifically designed with these patients in mind and include the following patented elements and key features;

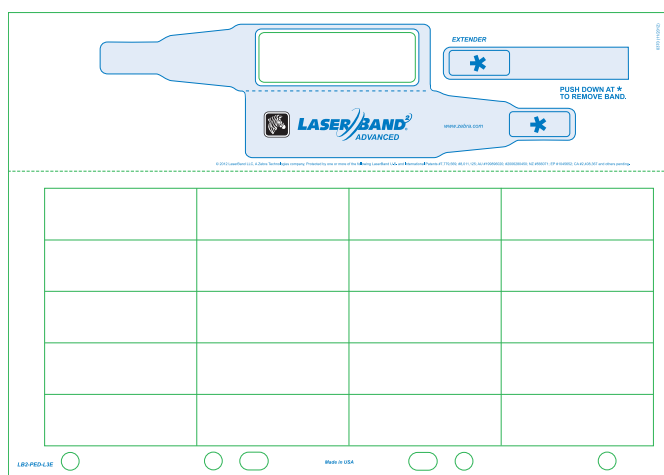
- Self-laminating seal protects the wristband from water, hand sanitiser gels and other liquids, preserving patient data and giving longer wristband usability.
- Intuitive wristband design allows for quick and easy application to the patient's wrist.
- A wristband extender bar is included on each sheet to allow greater flexibility in identifying bariatric and oedema patients.
- Hole-punched sheets to fit securely into patient charts.
- Forms are all manufactured with adhesive-free zones around edges and holes to prevent printer jamming.
- Product materials are specifically chosen and tested for compatibility and superior performance in Laser and Inkjet printers worldwide.
- Wristbands include tamper-evident security slits to ensure wristbands cannot be removed and re-applied.
- Wristbands are available in white or red, with red wristbands typically being used as a visual alert to nursing staff, where a patient has a specific medical condition.

LASERBAND®2 ADVANCED WRISTBANDS FOR PAEDIATRICS.

SPECIFICATIONS AT A GLANCE*

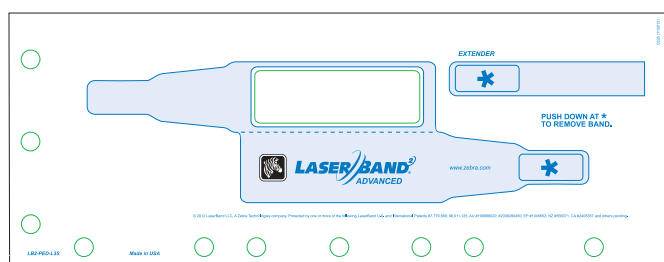


NOW A
ZEBRA TECHNOLOGIES
COMPANY



A4 sheet which contains 1 wristband and 20 chart labels.

This product is ideal for paediatric admissions where the combination sheet allows for the wristband and chart labels to be printed simultaneously. The extender bar on each sheet allows for the wristband length to be extended to that of an Adult sized wristband, offering greater flexibility for the wide range of patients treated in this department. This product streamlines the patient ID process, further simplifies identification throughout the patient stay and removes the need for multiple printing devices.



Wristband-only sheetlet

This product offers a more cost-effective solution where a single wristband is required to be printed on-demand. Wristband-only sheetlets are ideal for use in patient wards or when a replacement wristband is required.

ORDERING OPTIONS	FORMAT	COLOUR	BOX QUANTITY	SPECIFICATIONS	
LB2-PED-L3E	A4	WHITE	1000	Wristband length	185mm
LB2-PED-L3E-RED	A4	RED	1000	Wristband print area	70 x 22mm
LB2-PED-L3S	SHEETLET	WHITE	1000	Extender bar length	67mm
LB2-PED-L3S-RED	SHEETLET	RED	1000	Label size	68 x 23mm



Zebra Technologies – EMEA Headquarters & Sales Office

Zebra Technologies Europe Limited, Dukes Meadow, Millboard Road, Bourne End, Buckinghamshire, SL8 5XF, United Kingdom
Telephone: +44 (0)1628 556000 **Fax:** +44 (0)1628 556001 **Email:** mseurope@zebra.com **Web:** www.zebra.com

Other EMEA Locations

Europe: France, Germany, Italy, the Netherlands, Poland, Russia, Spain, Sweden, Turkey
Middle East & Africa: Dubai, South Africa

*Specifications subject to change without notice.

©2013 ZIH Corp. All product names and numbers are Zebra trademarks, and Zebra and the Zebra head graphic are registered trademarks of ZIH Corp. All rights reserved. All other trademarks are the property of their respective owners.