

CAN YOUR WIRELESS LAN TAKE THE PRESSURE?

The world is on the precipice of a massive shift. Mobility is exploding, pressuring wireless infrastructures from all sides with the Internet of Things, the mind-boggling growth of consumer devices, the expansion of cloud computing and bandwidth-hungry applications. Without the right wireless infrastructure, you could find these disruptive trends disruptive to your operations.



44X
growth
of digital
universe
by 2020²



57.6%³
of organizations
surveyed say that
big data is a
challenge

**BIG
DATA**



77%
of organizations
detected a
security event in
the past 12
months⁴



52%
of IT issues took
over half a day
to fix⁵

\$5,600/minute
- average data center outage costs

90 minutes
- average incident length⁶



EXPERIENCE THE DIFFERENCE BETWEEN MOVING AND MOVING FORWARD

When you start with optimal performance of Zebra's Wireless LAN, you end congestion, uncertainty and degraded service. What's more, you have a solid platform to support the Internet of Things. Now, you can sense, analyze and act faster, smarter and leaner.



Optimized for dense and challenging RF environments

Built to survive failure

Built-in location technology

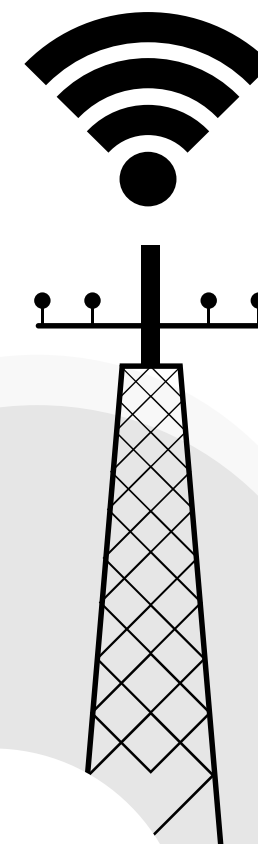
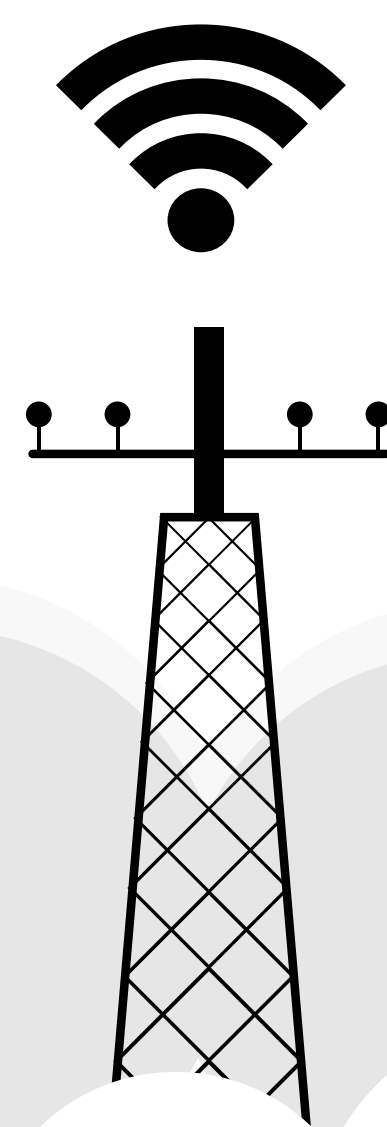
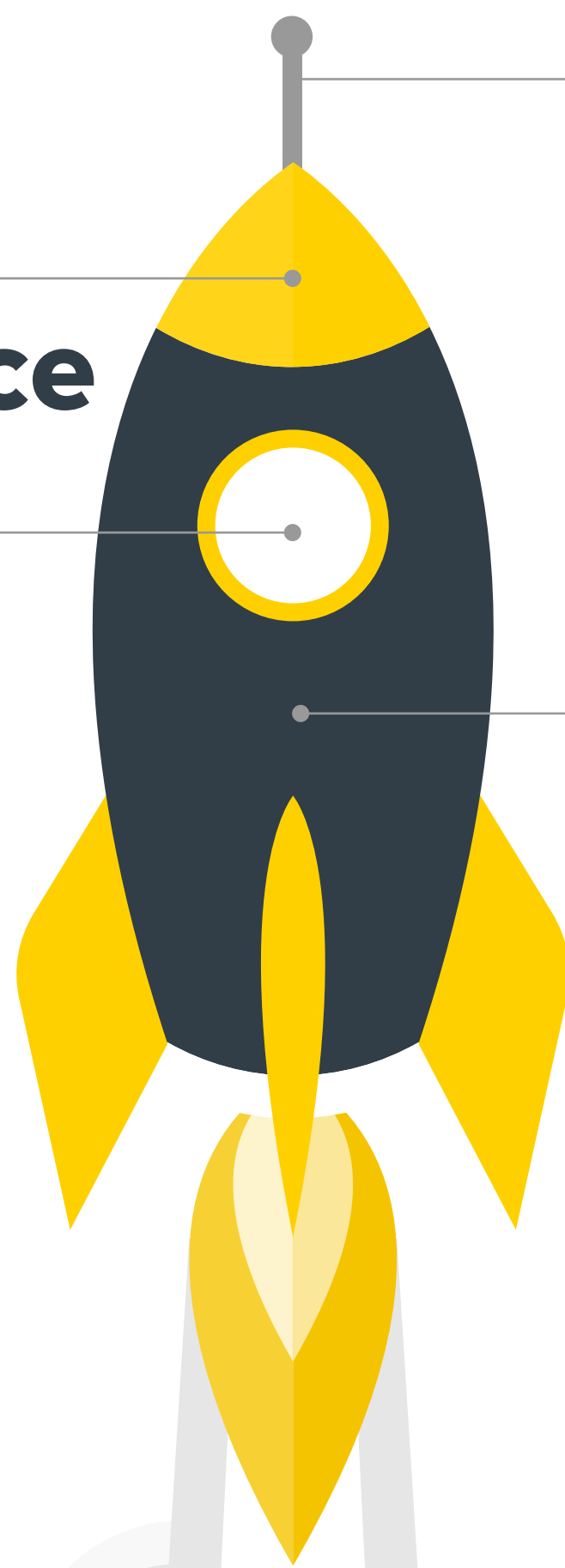
- Visualize & ID security threats
- See how to maximize staff productivity
- Engage consumers with more relevant push marketing

100% intelligence
at the edge inside each AP

6x faster
to troubleshoot with unified management

4x more scalable
thanks to a controller-less architecture⁷

3x faster
to rollout with zero-touch provisioning and 90-second installations⁸



DISCOVER HOW FAR OPTIMAL WIRELESS PERFORMANCE CAN TAKE YOU.

Sources:

1. Forrester Consulting, October 2014
2. Wipro Report
3. Wipro Report
4. 2014 US State of Cybercrime Survey, PwC
5. Stackify Network Research, 2014
6. Emerson Network Power, 2011
7. Tolly, May 2012
8. Tolly, May 2012