



FocusBT™

Driver and Software Quick Start Guide



Bluetooth
wireless



FocusBT Driver and Software Quick Start Guide

PLEASE PLUG IN THE BLUETOOTH ADAPTER BEFORE INSTALLING THE DRIVER!

Bluetooth Driver Installation

1

- Insert the included FocusBT CD into the CD-ROM drive. If the CD does not run automatically, locate the "My Computer" icon found on the Windows desktop and double click on it to open.



- Inside the "My Computer" window, locate the CD-ROM drive (This will usually be "D:"). Open the CD-ROM drive by double clicking on the icon.

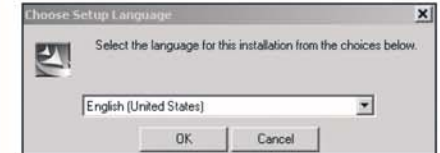


- Click on the "MetroBT Driver" button to begin installation.

Bluetooth Driver Installation

2

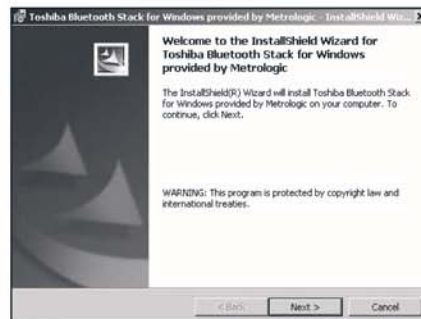
- Select appropriate language and click "OK."



Bluetooth Driver Installation

3

- At the Welcome screen, select "Next" to continue.



Bluetooth Driver Installation

4

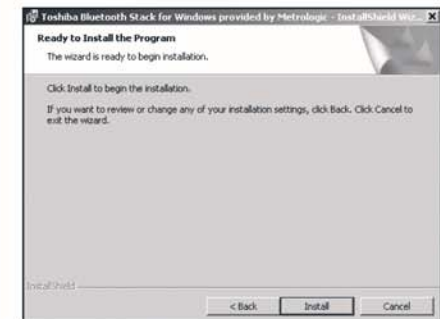
- Select "I accept the terms in the license agreement" and click "Next" to continue.



Bluetooth Driver Installation

5

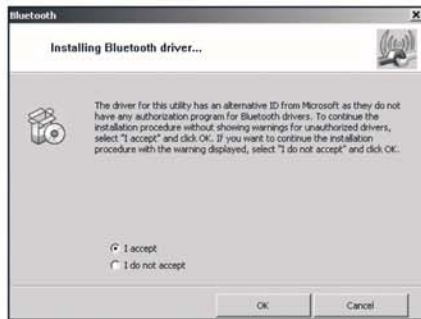
- Select "Install" to begin.



Bluetooth Driver Installation

6

- Select "I accept" and click "OK."



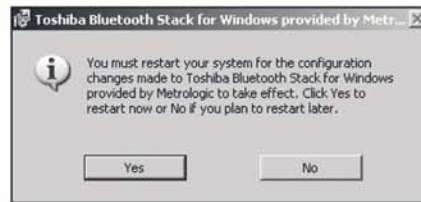
Bluetooth Driver Installation

7

- Plug in the Bluetooth device and click "OK" to continue.



- The computer must be rebooted for the driver to function properly. Select "Yes" to reboot.



FocusBT Connection Configuration

8

- Double click the Bluetooth icon located in the Windows Start bar located in the bottom right corner of the screen.



- The "New Connection Wizard" should automatically start.



Power on your FocusBT and allow it to boot completely (3 beeps will indicate the scanner is completely booted).

Select "Express Mode" and click "Next" to continue.

FocusBT Connection Configuration

9

- A search for Bluetooth devices should find FocusBT. The number(s) next to "FocusBT" indicates the serial number(s) of the unit(s) found.



Select the proper device and click "Next" to continue.

- The final screen of the "New Connection Wizard" should indicate the virtual Bluetooth COM port that was setup. This will usually be a high number, as seen in the screen shot to the right. Remember this COM number for application setup.



Click "Next" to continue.

Auto Reconnect Drivers

10

- From the main screen on the CD, select the "MetroBT Utility" to start the installation process.



Auto Reconnect Drivers

11

- Click "OK" to continue.



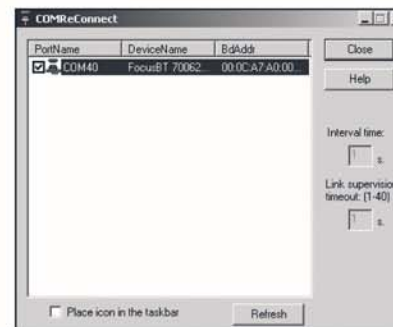
- Locate the "COMReConnect" icon on the Windows desktop and double click to open the program.



Setting up the Auto Reconnect Drivers

12

- The Auto Reconnect utility will automatically start if any of the Bluetooth COM ports are checked. If the "Place icon in the taskbar" option is checked, the utility will remain active after the window is closed.



Setting up the Auto Reconnect Drivers

13

- The Auto Reconnect utility will look like this when it is in use.

To disable the Auto Reconnect feature, click on the "X" in the upper right corner of the window or the "Close" button.

